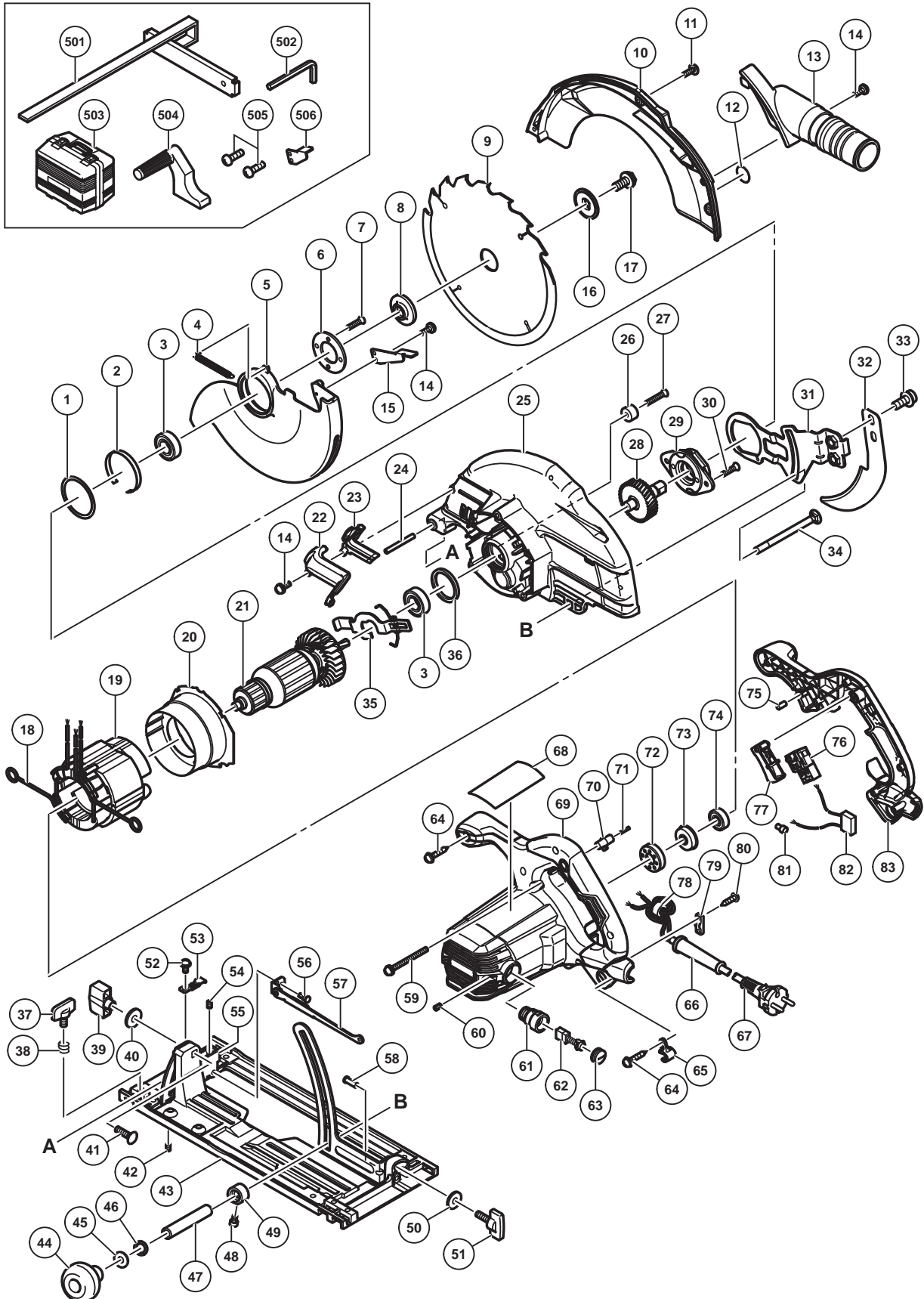


ELECTRIC TOOL PARTS LIST

CIRCULAR SAW Model C 9BU3

2016-6-2
(E1)



PARTS

C 9BU3

ITEM NO.	CODE NO.	DESCRIPTION	NO. USED	REMARKS
1	370540	WASHER	1	
2	998887	LINER	1	
3	6202VV	BALL BEARING 6202VVCMP2L	2	
4	370543	RETURN SPRING	1	
5	370283	LOWER GUARD	1	
6	370277	BEARING COVER	1	
7	992013	SEAL LOCK FLAT HD. SCREW M5 X 14	2	
8	370272	WASHER (A)	1	
9	303810	TCT SAW BLADE 235MM-D30 HOLE-NT20	1	
10	370280	SAW COVER	1	
11	951039	MACHINE SCREW (W/SP. WASHER) M4 X 12	3	
12		NAME PLATE (BRAKE)	1	
13	997247	DUST COLLECTOR	1	
14	935196	MACHINE SCREW (W/WASHERS) M4 X 12 (BLACK)	3	
15	370542	LEVER	1	
16	370279	WASHER (B)	1	
17	324662	HEX. SOCKET HD. BOLT M8 X 15.5	1	
18	937623	BRUSH TERMINAL	2	
* 19	340941C	STATOR ASS'Y 110V	1	INCLUD.18
* 19	340941G	STATOR ASS'Y 220V-230V	1	INCLUD.18
20	370292	FAN GUIDE	1	
* 21	361033C	ARMATURE 110V	1	
* 21	361033E	ARMATURE 220V-230V	1	
22	370282	FLOW GUIDE (B)	1	
23	370281	FLOW GUIDE (A)	1	
24	949884	ROLL PIN D8 X 50 (10 PCS.)	1	
25	370544	GEAR COVER	1	
26	337080	CUSHION	1	
27	949794	FLAT HD. SCREW M6 X 20 (10 PCS.)	1	
28	370276	SPINDLE AND GEAR SET	1	
29	370275	BEARING HOLDER	1	
30	303797	SEAL LOCK FLAT HD. SCREW M6 X 14	2	
31	370297	ARM	1	
32	370298	RIVING KNIFE	1	
33	370287	HEX. SOCKET HD. BOLT M8	2	
34	370266	DIAGONAL BOLT M8	1	
35	370291	LOCK LEVER	1	
36	303792	RUBBER RING	1	
37	301806	WING BOLT M6 X 15	1	
38	947859	LOCK SPRING	1	
39	324658	WING NUT M8	1	
40	949433	BOLT WASHER M8 (10 PCS.)	1	
41	302457	BOLT (SQUARE) M8 X 30	1	
42	302469	SLOTTED HD. SET SCREW (SEAL LOCK) M6 X 6	1	
43	370294	BASE ASS'Y	1	INCLUD.58
44	324660	KNOB	1	
45	949433	BOLT WASHER M8 (10 PCS.)	1	
46	676531	O-RING (P-7)	1	
47	370267	SLEEVE (A)	1	
48	370278	SEAL LOCK HEX. SOCKET HD. BOLT M4 X 6	1	

PARTS

C 9BU3

ITEM NO.	CODE NO.	DESCRIPTION	NO. USED	REMARKS
49	370268	SLEEVE (B)	1	
50	949425	WASHER M6 (10 PCS.)	1	
51	322959	WING BOLT M6 X 22	1	
52	331003	MACHINE SCREW (W/SP. WASHER) M4 (BLACK)	1	
53	324659	GUIDE PIECE	1	
54	319541	SEAL LOCK HEX. SOCKET SET SCREW M5 X 6	1	
55	308481	BEVEL PLATE	1	
56	370295	STEP PIN	1	
57	370296	PLATE	1	
58	308480	RIVET D6 X 17	1	
59	997841	MACHINE SCREW (W/WASHERS) M5 X 50 (BLACK)	3	
60	938477	HEX. SOCKET SET SCREW M5 X 8	2	
61	983362	BRUSH HOLDER	2	
* 62	999065	CARBON BRUSH (1 PAIR)	2	
* 62	999038	CARBON BRUSH (1 PAIR)	2	FOR GBR (110V)
63	961781	BRUSH CAP	2	
64	301653	TAPPING SCREW (W/FLANGE) D4 X 20 (BLACK)	6	
65	370269	CORD HOLDER	1	
66	953327	CORD ARMOR D8.8	1	
* 67	500390Z	CORD	1	(CORD ARMOR D8.8)
* 67	500440Z	CORD	1	(CORD ARMOR D8.8) FOR GBR (230V)
* 67	500517Z	CORD	1	(CORD ARMOR D8.8) FOR GBR (110V)
68		NAME PLATE	1	
69	370288	HOUSING	1	
70	370262	OFF LOCK BUTTON	1	
71	335465	SPRING (A)	1	
72	370628	RUBBER BUSHING	1	
73	325355	BEARING BUSHING	1	
74	6000VV	BALL BEARING 6000VVCMP2L	1	
75	931701	BEARING LOCK	1	
76	370260	SWITCH	1	
77	370261	TRIGGER	1	
78	334379	FERRITE CORE	1	
79	937631	CORD CLIP	1	
80	984750	TAPPING SCREW (W/FLANGE) D4 X 16	2	
81	959141	CONNECTOR 50092 (10 PCS.)	1	
* 82	930039	NOISE SUPPRESSOR	1	
* 82	370672	NOISE SUPPRESSOR	1	FOR GBR (110V)
83	370290	HANDLE COVER	1	

STANDARD ACCESSORIES

C 9BU3

ITEM NO.	CODE NO.	DESCRIPTION	NO. USED	REMARKS	
501	303888	GUIDE	1		
502	872422	HEX. BAR WRENCH 6MM	1		
* 503	370627	CASE	1	FOR EUROPE,GBR	
504	303811	SIDE HANDLE	1		
505	323208	MACHINE SCREW (W/WASHERS) M6 X 20 (BLACK)	2		
506	370264	LEVER	1		