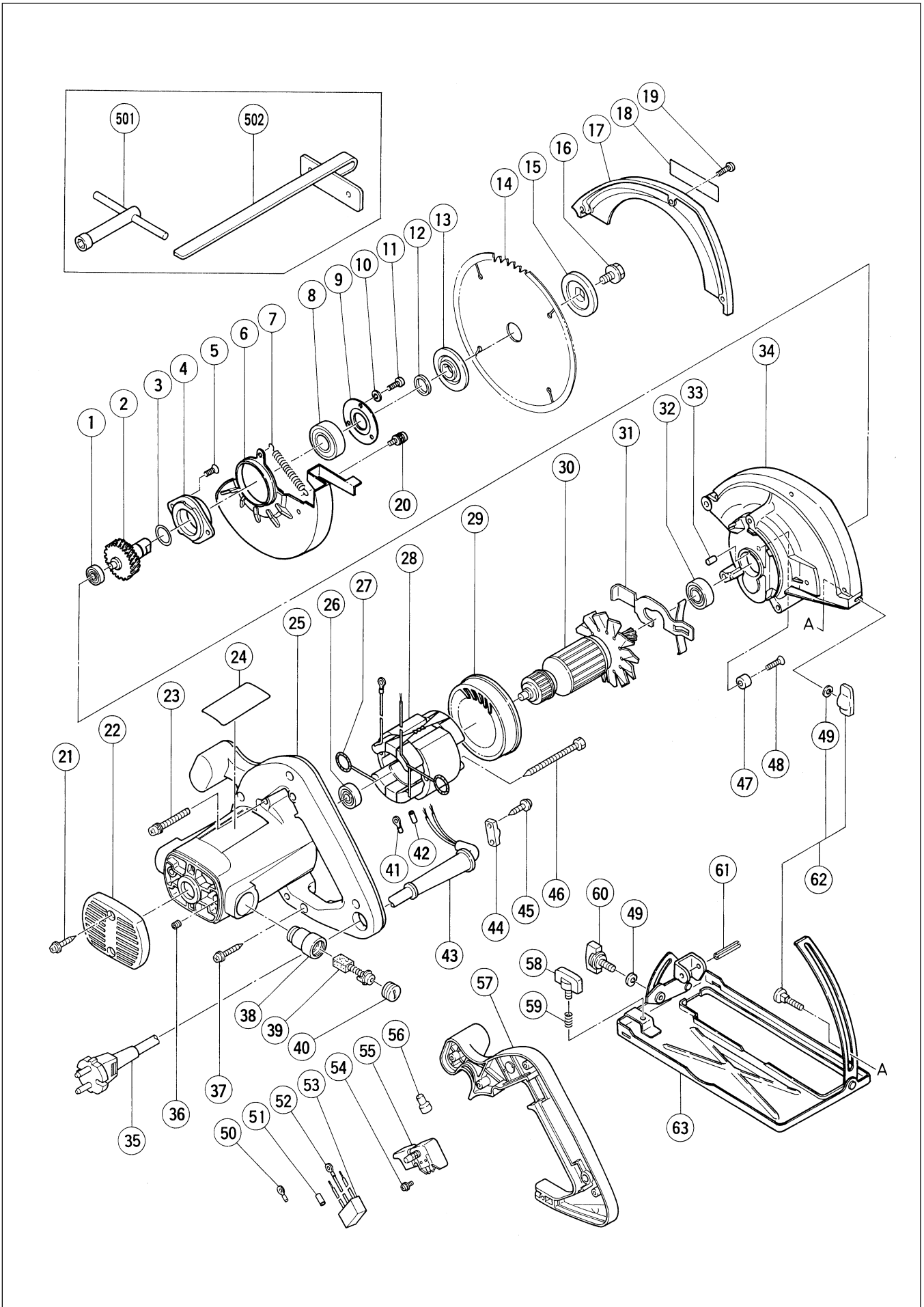


# Assembly Diagram for C 6SE



## PARTS

C 6SE

ITEM NO.	CODE NO.	DESCRIPTION	NO. USED	REMARKS	
1	606-ZZM	BALL BEARING 606ZZC2PS2L	1		
2	317-932	SPINDLE AND GEAR SET	1		
3	873-095	O-RING (P-16)	1		
4	941-048	BEARING HOLDER	1		
5	990-430	SEAL LOCK FLAT HD. SCREW M4X10	2		
6	317-930	SAFETY COVER	1		
7	957-062	RETURN SPRING	1		
8	620-2VV	BALL BEARING 6202VVCMP2L	1		
9	941-049	BEARING CAP	1		
10	949-451	SPRING WASHER M3 (10 PCS.)	3		
11	949-203	MACHINE SCREW M3X8 (10 PCS.)	3		
12	961-366	DISTANCE PIECE	1		
*	13	993-598	WASHER (A)	1	
*	13	315-968	WASHER (A)	1	FOR TPE
*	14	317-452	TCT SAW BLADE 165MM-D20 HOLE-NT40	1	
*	14	317-937	TCT SAW BLADE 165MM-D25.4 HOLE-NT40	1	FOR TPE
	15	957-064	WASHER (B)	1	
	16	957-749	BOLT (W/WASHER) M7X17.5	1	
	17	317-933	SAW COVER	1	
	18		HITACHI LABEL	1	
	19	949-219	MACHINE SCREW M4X16 (10 PCS.)	3	
	20	986-723	MACHINE SCREW (W/WASHERS) M4X8	1	
	21	301-653	TAPPING SCREW (W/FLANGE) D4X20 (BLACK)	2	
	22	961-732	TAIL COVER	1	
	23	302-434	MACHINE SCREW (W/WASHERS) M5X45 (BLACK)	3	
*	24		NAME PLATE	1	
*	25	317-935	HOUSING ASS'Y	1	INCLUD.36,38
*	25	317-936	HOUSING ASS'Y	1	INCLUD.36,38 FOR NZL
	26	608-VVM	BALL BEARING 608VVC2PS2L	1	
	27	930-703	BRUSH TERMINAL	2	
*	28	340-447C	STATOR ASS'Y 110V	1	INCLUD.27
*	28	340-447E	STATOR ASS'Y 220V-230V	1	INCLUD.27
*	28	340-447F	STATOR ASS'Y 240V	1	INCLUD.27
*	28	340-447G	STATOR ASS'Y 220V-230V	1	INCLUD.27 FOR NZL,KOR
*	28	340-447H	STATOR ASS'Y 240V	1	INCLUD.27 FOR AUS
	29	987-980	FAN GUIDE	1	
*	30	360-500C	ARMATURE 110V	1	
*	30	360-500E	ARMATURE 220V-230V	1	
*	30	360-500F	ARMATURE 240V	1	
	31	987-981	LOCK LEVER	1	
	32	600-0VV	BALL BEARING 6000VVCMP2L	1	
	33	931-701	BEARING LOCK	1	
	34	317-931	GEAR COVER ASS'Y	1	INCLUD.33,47,48
*	35	500-455Z	CORD	1	(CORD ARMOR D8.8)
*	35	930-054	CORD	1	(CORD ARMOR D10.1) FOR TPE
*	35	500-234Z	CORD	1	(CORD ARMOR D8.8) FOR INA,KOR
*	35	500-423Z	CORD	1	(CORD ARMOR D8.8) FOR SIN,KUW
*	35	500-439Z	CORD	1	(CORD ARMOR D8.8) FOR NZL,AUS
	36	938-477	HEX. SOCKET SET SCREW M5X8	2	
	37	307-028	TAPPING SCREW (W/FLANGE) D4X25 (BLACK)	4	
	38	957-051	BRUSH HOLDER	2	

\* : ALTERNATIVE PARTS

6 - 99

PARTS

C 6SE

ITEM NO.	CODE NO.	DESCRIPTION	NO. USED	REMARKS
39	999-043	CARBON BRUSH (1 PAIR)	2	
40	935-829	BRUSH CAP	2	
* 41	980-063	TERMINAL	2	FOR CORD
* 42	981-373	TUBE (D)	2	FOR CORD
* 43	953-327	CORD ARMOR D8.8	1	
* 43	938-051	CORD ARMOR D10.1	1	
44	937-631	CORD CLIP	1	
45	984-750	TAPPING SCREW (W/FLANGE) D4X16	2	
46	953-174	HEX. HD. TAPPING SCREW D5X55	2	
47	961-729	CUSHION	1	
48	949-794	FLAT HD. SCREW M6X20 (10 PCS.)	1	
49	948-167	SUPER LOCK WASHER M6	2	
* 50	980-063	TERMINAL	2	FOR NZL,KOR
* 51	981-373	TUBE (D)	2	FOR AUS
* 52	959-144	TERMINAL 50051 (10 PCS.)	1	FOR NOISE SUPPRESSOR
* 53	994-273	NOISE SUPPRESSOR	1	FOR NZL,AUS,KOR
* 54	305-499	MACHINE SCREW (W/WASHER) M3.5X6	4	EXCEPT FOR AUS
* 55	957-747	SWITCH (A) (1P SCREW TYPE) W/LOCK	1	
* 55	302-470	SWITCH (C) (1P SCREW TYPE) W/O LOCK	1	FOR NZL
* 55	963-756Z	SWITCH (2P PILLAR TYPE) W/SAFETY LOCK	1	FOR AUS
* 56	959-140	CONNECTOR 50091 (10 PCS.)	1	EXCEPT FOR NZL,AUS
57	302-320	HANDLE COVER	1	
58	301-806	WING BOLT M6X15	1	
59	947-859	LOCK SPRING	1	
60	302-459	WING BOLT M6X17	1	
61	949-515	ROLL PIN D6X30 (10 PCS.)	1	
62	314-620	BOLT ASS'Y (SQUARE) M6X22	1	INCLUD.49
63	317-934	BASE ASS'Y	1	INCLUD.49,58-60,62

**STANDARD ACCESSORIES**

C 6SE

ITEM NO.	CODE NO.	DESCRIPTION	NO. USED	REMARKS	
501	940-543	BOX WRENCH 10MM	1		
502	316-106	GUIDE WITH WING BOLT AND SPRING	1		

**OPTIONAL ACCESSORIES**

ITEM NO.	CODE NO.	DESCRIPTION	NO. USED	REMARKS	
601	949-172	SAW BLADE (COMBINATION) 160MM-D19 HOLE	1		
602	879-096	PLANER SAW BLADE 160MM-D19 HOLE	1		
603	879-097	SAW BLADE 160MM-D19 HOLE FOR PLASTIC	1		
604	879-098	SAW BLADE 160MM-D19 HOLE FOR ALUMINUM	1		
605	939-156	CUT-OFF WHEELS 150MM (10 PCS.)	1		
606	961-734	CORD HANGER	1		

\* : ALTERNATIVE PARTS