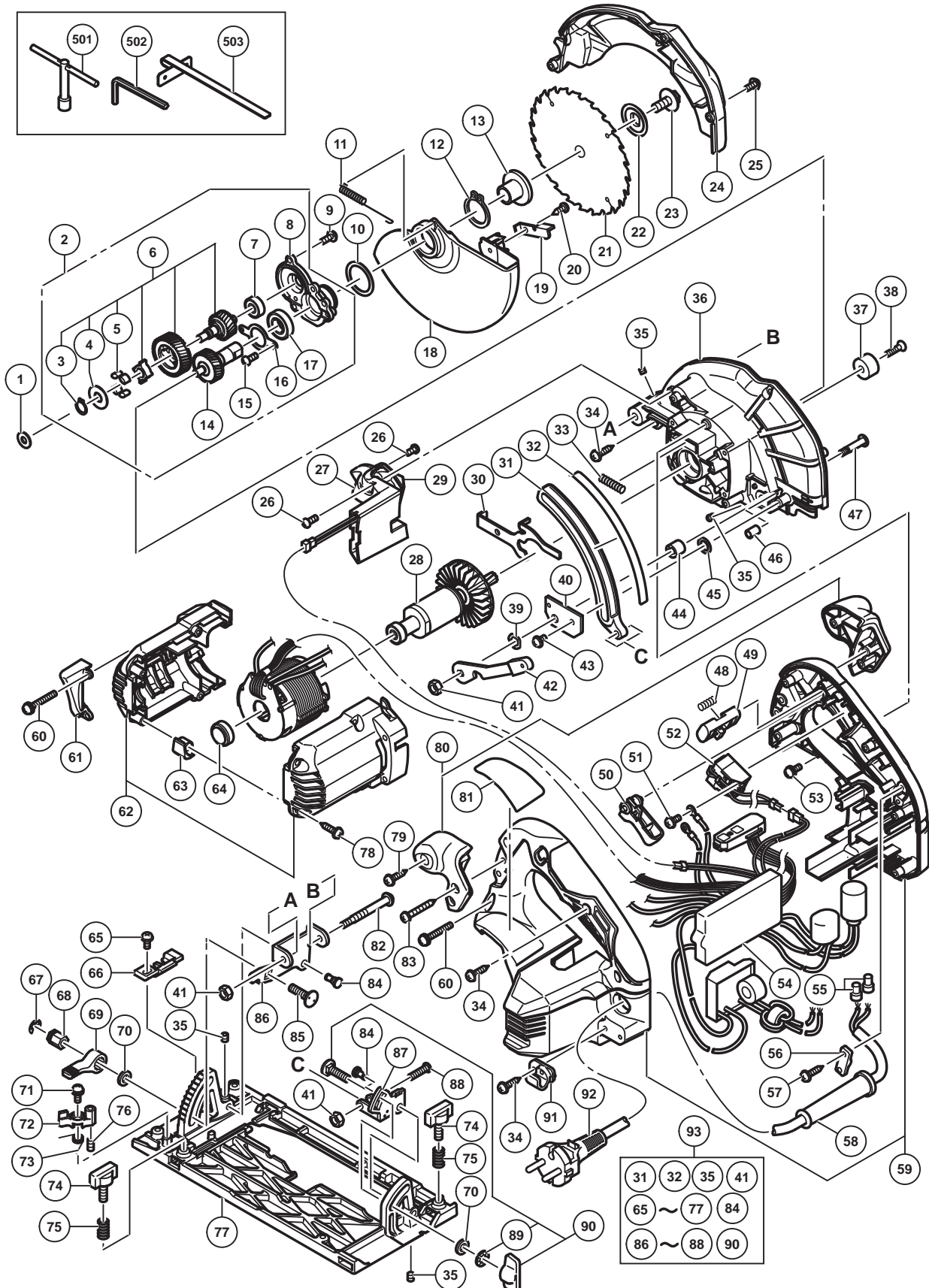


## ELECTRIC TOOL PARTS LIST

### ■ CIRCULAR SAW Model C 6MEY

2015-7-9  
(E1)



**PARTS**

C 6MEY

ITEM NO.	CODE NO.	DESCRIPTION	NO. USED	REMARKS
1	329975	WASHER (A)	1	
2	339373	BEARING HOLDER ASS'Y	1	INCLUD.6-8,14-17
3	940079	RETAINING RING FOR D8 SHAFT	1	
4	339378	COUPLING COVER	1	
5	339377	COUPLING DAMPER (A)	4	
6	339376	SECOND SHAFT ASS'Y (A)	1	INCLUD.3-5
7	606ZZM	BALL BEARING 606VV	1	
8	338921	BEARING HOLDER	1	
9	951039	MACHINE SCREW (W/SP. WASHER) M4 X 12	3	
10	339257	WASHER	1	
11	338926	RETURN SPRING	1	
12	939548	RETAINING RING FOR D22 SHAFT (10 PCS.)	1	
13	338915	WASHER (A)	1	
14	338923	SPINDLE GEAR SET	1	
15	949203	MACHINE SCREW M3 X 8 (10 PCS.)	2	
16	338922	BEARING COVER	1	
17	6901VV	BALL BEARING 6901VV	1	
18	338905	LOWER GUARD	1	
19	338927	KNOB	1	
20	302090	TAPPING SCREW D4 X 10 (BLACK)	1	
21	338935	TCT SAW BLADE 165MM-D20 HOLE-NT24	1	
22	338916	WASHER (B)	1	
23	338917	HEX FLANGE BOLT	1	
24	339261	SAW COVER	1	
25	333781	MACHINE SCREW (W/WASHER) M4 X 12 (BLACK)	1	
26	323211	MACHINE SCREW M4 X 8 (BLACK)	2	
27	339220	LED	1	
28	361011	ROTOR	1	
29	339374	LED-CASE (C)	1	
30	338918	LOCK LEVER	1	
31	338911	LINK	1	
32	339258	GAUGE PLATE (A)	1	
33	334225	SPRING	1	
34	307811	TAPPING SCREW (W/FLANGE) D4 X 16 (BLACK)	6	
35	319541	SEAL LOCK HEX. SOCKET SET SCREW M5 X 6	4	
36	338907	GEAR COVER	1	
37	310842	CUSHION	1	
38	949793	FLAT HD. SCREW M5 X 20 (10 PCS.)	1	
39	334242	WAVE WASHER 8	1	
40	338929	COVER PLATE	1	
41	308387	U-NUT M5	3	
42	338930	LEVER (A)	1	
43	325079	MACHINE SCREW (W/SP. WASHER) M4 X 8 (BLACK)	1	
44	333681	CAM	1	
45	338931	WASHER	1	
46	338932	LOCK SLEEVE	1	
47	333680	CAM SHAFT	1	
48	336650	SPRING	1	
49	338901	KNOB	1	
50	338899	TRIGGER	1	



