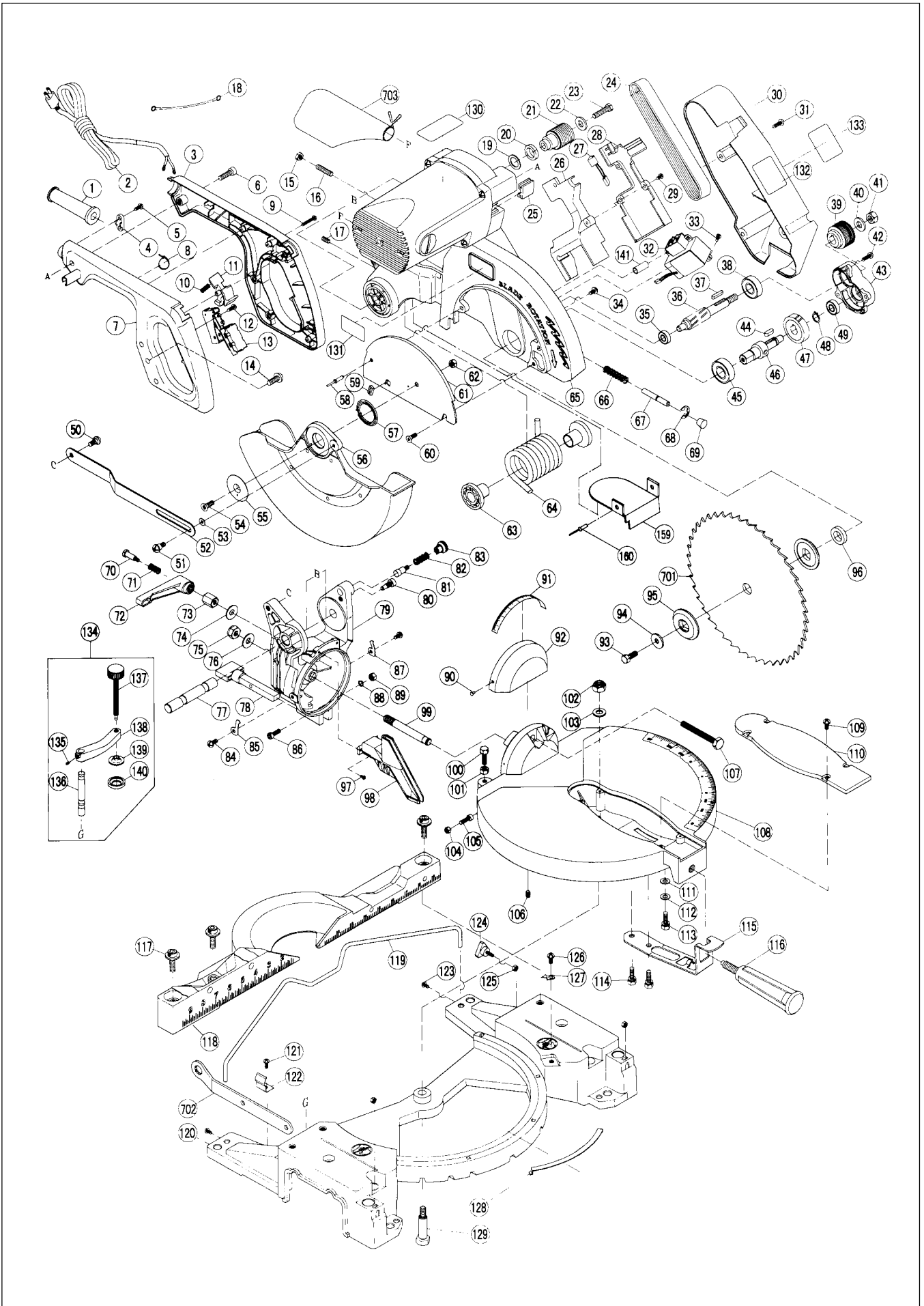
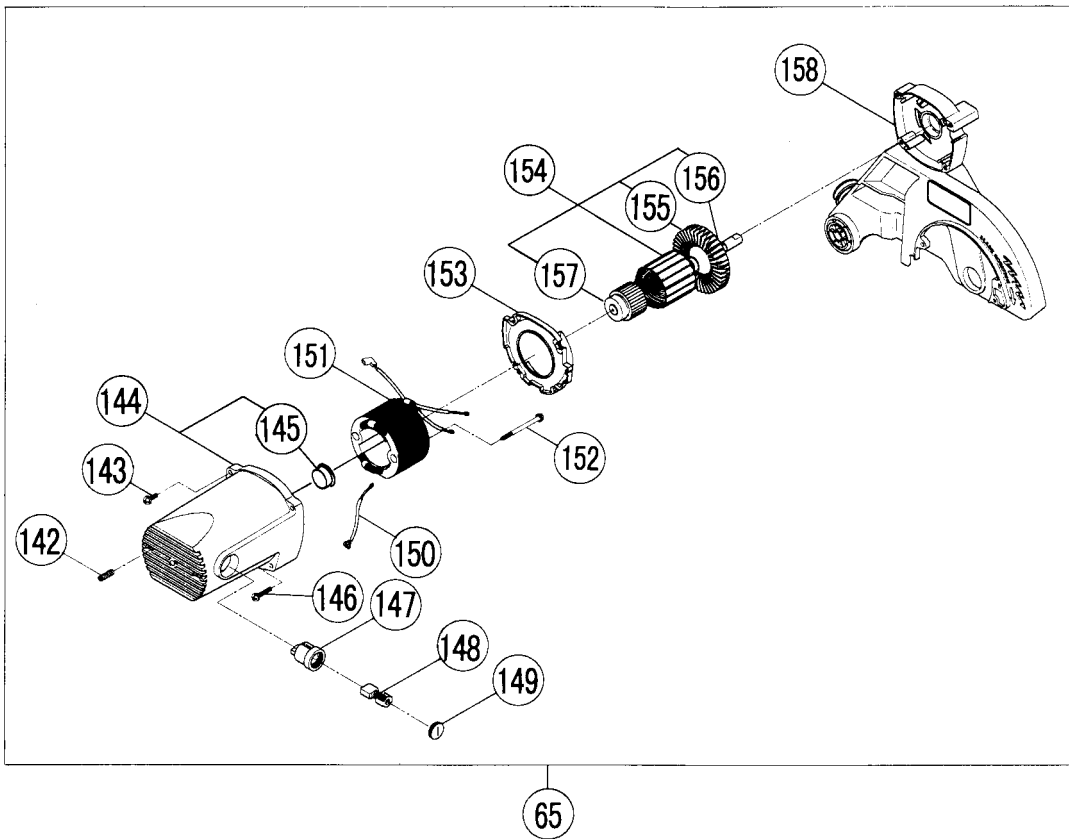


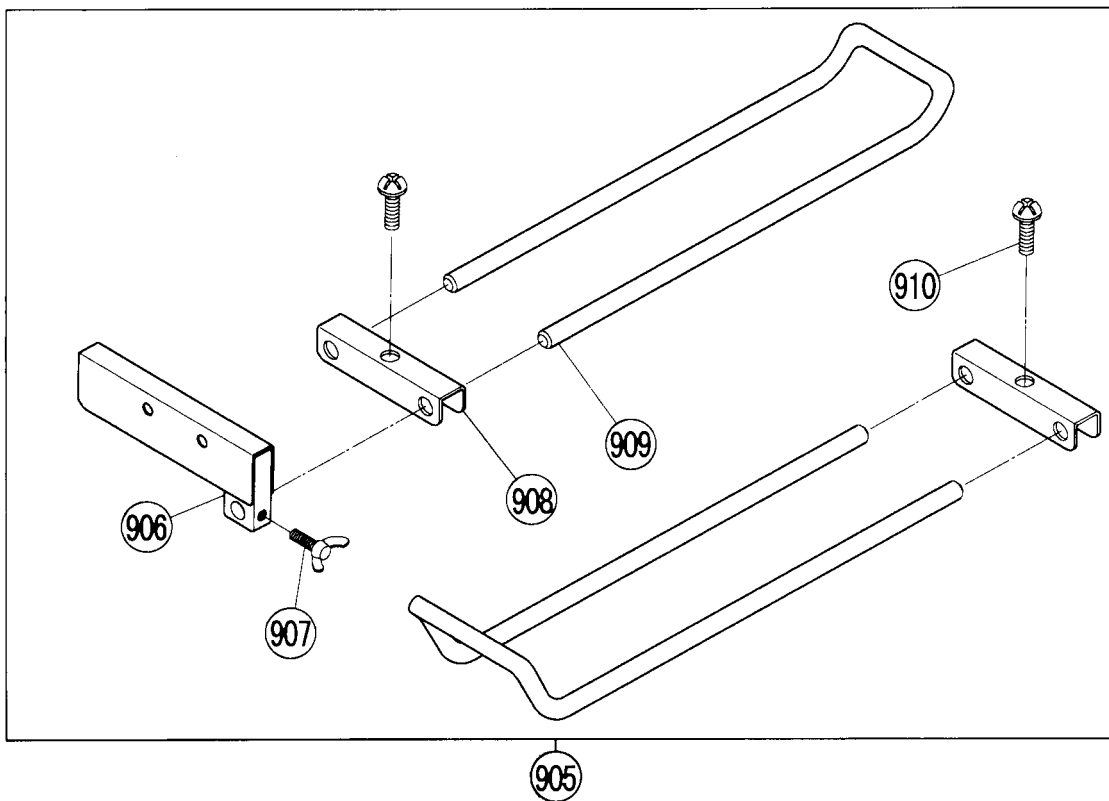
# Assembly Diagram for C 10FCD



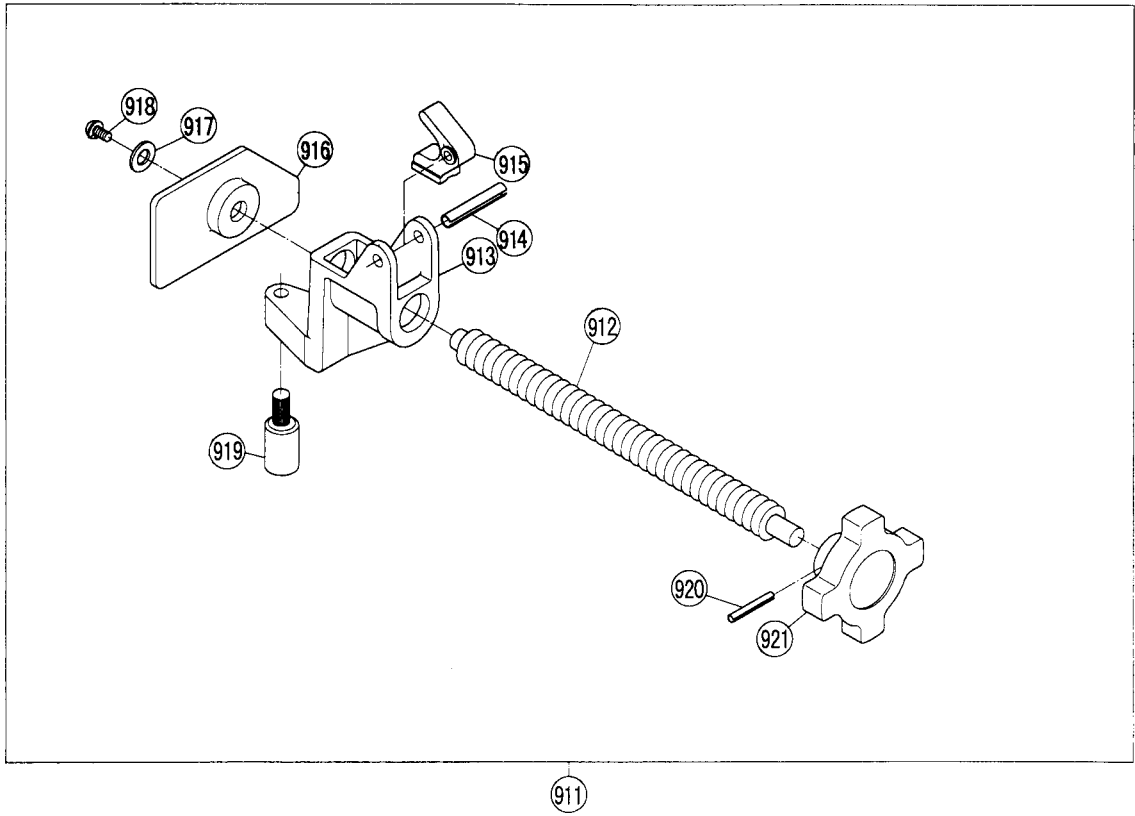
### MOTOR ASS'Y



### HOLDER ASS'Y



WISE ASS'Y



## PARTS

C 10FCD

ITEM No.	CODE NO.	DESCRIPTION	NO. USED	REMARKS	
1	311-096	CORD GUARD	1		
2	317-546	POWER CABLE	1		
3	317-547	HANDLE COVER	1		
4	311-070	CORD CLAMP	1		
5	317-548	TAPPING SCREW D4X12	2		
6	949-780	HEX. SOCKET HD. BOLT M8X35 (10 PCS.)	3		
7	317-549	HANDLE	1		
8	317-550	LOCKING CABLE TIE	2		
9	317-551	TAPPING SCREW D4X25	3		
10	311-106	SPRING	1		
11	317-552	SWITCH LOCK	1		
12	311-103	TRUSS HD. TAPPING SCREW D4X12	1		
13	317-553	SWITCH	1		
14	949-271	MACHINE SCREW M8X20 (10 PCS.)	1		
15	949-556	NUT M6 (10 PCS.)	1		
16	950-094	HEX. SOCKET SET SCREW M6X20	1		
17	968-247	HEX. SOCKET SET SCREW M6X10	2		
18	317-554	INTERNAL WIRE	1		
19	317-555	FLAT WASHER M13	1		
20	317-556	MAGNET	1		
21	317-557	PULLEY (A)	1		
22	317-558	FLAT WASHER 1/4"X3/4"	1		
23	949-613	BOLT M6X16 (10 PCS.)	1		
24	317-559	V-BELT	1		
25	317-560	WIRE PROTECTOR	1		
26	317-561	CONNECTOR BOX	1		
27	317-562	PICK UP	1		
28	317-563	CONNECTOR BOX COVER	1		
29	995-062	TAPPING SCREW (W/WASHER) D4X16	3		
30	317-564	REAR COVER	1		
31	949-239	MACHINE SCREW M5X16 (10 PCS.)	3		
32	317-565	CONTROLLER (R)	1		
33	317-566	TAPPING SCREW D4X16	3		
34	317-567	ROUND WASHER HD. SCREW M5X8	2		
35	607-ZZM	BALL BEARING 607ZZMC2PS2S	1		
36	317-569	GEAR SHAFT	1		
37	317-570	PARALLEL KEY 4X4X20	1		
38	600-1VV	BALL BEARING 6001VVCMP2L	1		
39	317-571	PULLEY (B)	1		
40	317-572	FLAT WASHER	1		
41	314-519	NUT CHUCK M8	1		
42	949-239	MACHINE SCREW M5X16 (10 PCS.)	3		
43	317-573	GEAR BOX	1		
44	317-574	PARALLEL KEY 4X4X8	1		
45	317-575	BALL BEARING 6003LLU	1		
46	317-576	CUTTER SHAFT	1		
47	317-577	HELIX GEAR	1		
48	317-578	C-RING	1		
49	608-VVM	BALL BEARING 608VVMC2EPS2L	1		
50	314-980	TRUSS HD. STEP SCREW M6X12	1		
51	317-579	TRUSS HD. ROUND NECK SCREW M6X10	1		

**PARTS**

C 10FCD

ITEM No.	CODE NO.	DESCRIPTION	NO. USED	REMARKS
52	317-580	LEVER	1	
53	317-505	FLAT WASHER M6	1	
54	317-582	COUNTER HD. SCREW M6X16	1	
55	317-583	COLLAR	1	
56	317-584	PC-GUARD	1	
57	314-987	SPRING GUARD	1	
58	311-036	RIVET 3/16"X17/32"	1	
59	317-585	BUMPER	1	
60	317-586	COUNTER HD. SCREW M5X12	1	
61	317-587	CUTTER SHAFT GUARD	1	
62	314-522	SPECIAL NUT CHUCK M6	1	
63	317-588	SHAFT SLEEVE		
64	317-589	TORSION SPRING	1	
* 65	317-590	MOTOR ASS'Y 115V (UL)	1	INCLUD.142-158
* 65	317-591	MOTOR ASS'Y 115V (CSA)	1	INCLUD.142-158
66	317-600	SPRING	1	
67	317-601	BRACKET STOP	1	
68	317-602	E-RING	1	
69	311-016	CAP RUBBER	1	
70	317-362	SCREW	1	
71	317-363	COMPRESSION SPRING	1	
72	317-364	CLAMP LEVER	1	
73	317-365	HANDLE COLLAR	1	
74	317-603	WASHER	1	
75	317-604	NUT CHUCK M10	1	
76	317-603	WASHER	1	
77	317-606	PIVOT SHAFT	1	
78	317-607	LOCATING BAR	1	
79	317-608	ANGLE REGULATOR	1	
80	317-609	SET BOLT	1	
81	317-610	BRACKET STOP	1	
82	317-611	COMPRESSION SPRING	1	
83	317-612	PLUNGER HANDLE	1	
84	949-236	MACHINE SCREW M5X10 (10 PCS.)	2	
85	317-613	NEEDLE POINTER (L-SIDE)	1	
86	949-822	HEX. SOCKET HD. BOLT M5X35 (10 PCS.)	1	
87	317-614	NEEDLE POINTER (R-SIDE)	1	
88	949-454	SPRING WASHER M5 (10 PCS.)	1	
89	317-615	NUT CHUCK M5	1	
90	311-042	DRIVE SCREW D2.3X5	2	
91	317-616	TILTING SCALE	1	
92	317-617	PLATE COVER	1	
93	317-618	BOLT (LEFT HAND) M8X25	1	
94	317-619	BLADE WASHER M30	1	
95	317-428	ARBOR COLLAR	2	
96	317-620	COLLAR D25.4	1	
97	949-239	MACHINE SCREW M5X16 (10 PCS.)	2	
98	317-621	CHIP DEFLECTOR	1	
99	317-622	PIVOT SHAFT	1	
100	949-676	BOLT M6X20 (10 PCS.)	2	
101	949-556	NUT M6 (10 PCS.)	2	

\* : ALTERNATIVE PARTS

## PARTS

C 10FCD

ITEM No.	CODE NO.	DESCRIPTION	NO. USED	REMARKS
102	314-519	NUT CHUCK M8	1	
103	311-047	FLAT WASHER M8	1	
104	949-556	NUT M6 (10 PCS.)	1	
105	317-623	HEX. SOCKET SET SCREW M6X25	1	
106	968-247	HEX. SOCKET SET SCREW M6X10	1	
107	311-108	HEX. BOLT M10X65	1	
108	317-624	TABLE	1	
109	949-216	MACHINE SCREW M4X10 (10 PCS.)	4	
110	317-625	TABLE INSERT	1	
111	317-626	WASHER		
112	317-627	FLAT WASHER 1/4"X5/8"	1	
113	317-628	HEX. BOLT (W/WASHER) M6X20	1	
114	317-628	HEX. BOLT (W/WASHER) M6X20	2	
115	317-630	SPRING PLATE	1	
116	317-631	MITER HANDLE	1	
117	317-632	HEX. SOCKET HD. BOLT M8X45	3	
118	317-633	FENCE	1	
119	317-634	EXTENSION STAY	1	
120	317-635	BASE	1	
121	317-636	TAPPING SCREW D5X10	1	
122	317-353	FOLLOWER PLATE	1	
123	949-236	MACHINE SCREW M5X10 (10 PCS.)	2	
124	317-637	CLAMP BOLT M5X15	1	
125	949-555	NUT M5 (10 PCS.)	4	
126	949-236	MACHINE SCREW M5X10 (10 PCS.)	1	
127	317-638	ANGLE POINTER	1	
128	317-639	SLIDE PLATE	3	
129	317-640	CENTER SHAFT	1	
130		NAME PLATE	1	
131		HITACHI LABEL	1	
132	310-871	CAUTION LABEL (E)	1	
133	310-870	WARNING LABEL (A)	1	
134	317-642	WISE ASS'Y (FOR VERTICAL)	1	INCLUD.135-140
135	968-247	HEX. SOCKET SET SCREW M6X10	1	
136	317-643	SUPPORT	1	
137	317-644	SCREW BAR	1	
138	317-645	WISE BEARING	1	
139	317-646	FLANGE	1	
140	317-647	BUSHING	1	
141	317-641	INSULATING SLEEVE	2	
142	967-377	HEX. SOCKET SET SCREW M5X8	2	
143	880-734	MACHINE SCREW (W/WASHERS) M5X25 (BLACK)	2	
144	317-592	HOUSING ASS'Y	1	INCLUD.145
145	314-577	BEARING BUSHING	1	
146	997-841	MACHINE SCREW (W/WASHERS) M5X50 (BLACK)	2	
147	314-586	BRUSH HOLDER	2	
148	311-089	CARBON BRUSH	2	
149	314-583	BRUSH CAP	2	
150	317-593	INTERNAL WIRE	1	
151	317-594	STATOR 115V	1	
152	317-595	MACHINE SCREW M5X60	2	



