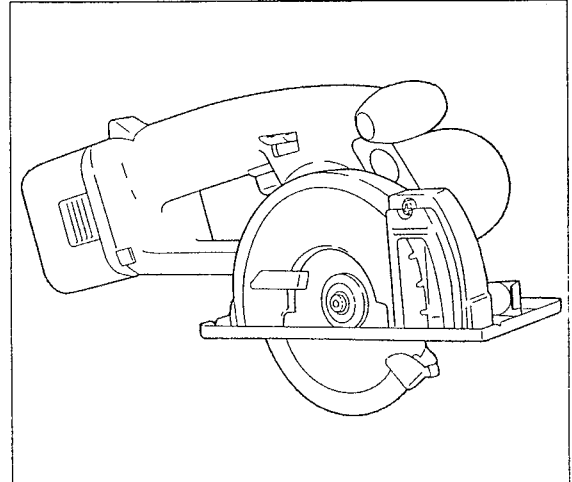


Service Manual

Cordless Metal Cutter
EY3502

CONTENTS

	Page
▪ Specifications	1
▪ Disassembly & Assembly Instructions	2 - 5
▪ Wiring Connection Diagram	6
▪ Schematic Diagram	6
▪ Troubleshooting	7 - 8
▪ Exploded View	9
▪ Replacement Parts List	10



SPECIFICATIONS

METAL CUTTER

Motor voltage	:	12V DC
Blade speed	:	3,400 min ⁻¹ (RPM)
Blade size	:	110mm, 4-3/8"
Outside diameter	:	110mm, 4-3/8"
Mounting hole	:	20mm
Maximum cutting depth	:	36mm, 1-13/32"
Dimensions	:	325mm, 12-51/64"
Length	:	325mm, 12-51/64"
Width	:	178mm, 7"
Height	:	172mm, 6-49/64"
Mass (Weight)	:	2.4kg, 5.3lbs. including battery pack

BATTERY PACK

Storage battery	:	Ni-Cd battery
Battery voltage	:	12V DC (1.2V × 10 cells)
Battery life	:	Approx. 1,200 cycles (1cycle = 1 charge / 1 discharge)

BATTERY CHARGER

Input	:	120V AC
Mass	:	0.56kg, 1.2lbs.
Charging time	:	Approx. 15/20 min.

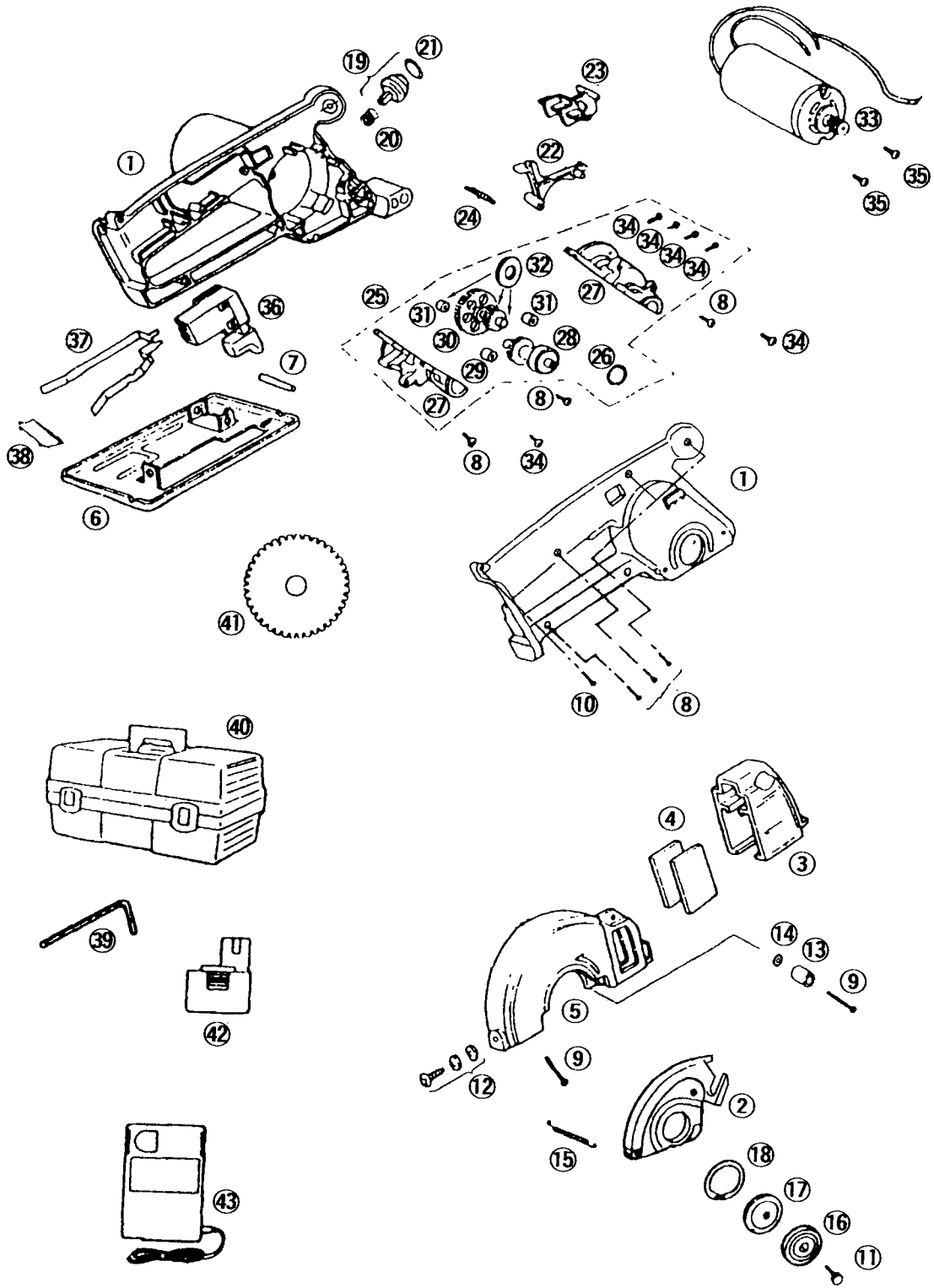
STANDARD EQUIPMENT

Battery charger, Battery pack, Blade, Hex wrench

Panasonic

© 1996 Matsushita Electric Works, Ltd.
All rights reserved. Unauthorized copying and distribution is a violation of law.

EXPLODED VIEW



REPLACEMENT PARTS LIST

Ref No.	Parts No.	Parts Name & Descriptions	Per set	Remarks
Note : *A ... commercial available *B ... only available as set *C ... available individually				
1	EY3502K3078	HOUSING AB SET	1	
2	EY3502K1198	LOWER BLADE GUARD	1	
3	EY3502X3748	TRANSPARENT WINDOW	1	
4	EY3502X3518	GLASS PLATE	2	*B
5	EY3502K3108	UPPER BLADE GUARD	1	
6	EY3502S3428	BASE	1	
7	EY3500K0357	SPRING PIN	1	φ6-45
8	EY3502K9448	TAPPING SCREW	6	*C K4-20
9	EY3502K9438	TAPPING SCREW	2	*C K4-30
10	EY3502K9038	TAPPING SCREW	1	*C K3-12
11	EY3500K6257	HEX BOLT	1	M5-12
12	EY3501L6357	SCREW	1	M5-14
13	EY3500K0397	LOWER GUARD STOPPER	1	
14	EY3500Y6457	FLAT WASHER	1	
15	EY3502L0928	SPRING	1	φ4
16	EY3500K1178	OUTER WASHER	1	
17	EY3502K1168	INNER WASHER	1	
18	EY6800B0437	STOP RING	1	
19	EY3502Y0368	SHAFT LOCK BUTTON	1	
20	EY3500K0197	LOCK SPRING	1	
21	EY3500K0957	O-RING FOR SHAFT LOCK BUTTON	1	
22	EY3502Y3238	OFF LOCK LEVER	1	
23	EY3502Y1588	SWITCH LOCK LEVER	1	
24	EY3500K0917	SWITCH LOCK SPRING	1	
25	EY3502L1458	GEAR BOX BLOCK	1	
26	EY3500K0967	O-RING	1	
27	EY3502L1768	GEAR BOX SET	1	
28	EY3502L4698	OUTPUT GEAR	1	
29	EY3502L0388	BEARING A	1	φ8
30	EY3502L1438	INTERNAL GEAR	1	
31	EY3502L0378	BEARING B	2	*C φ7
32	EY3500K0847	THRUST PLATE	3	*C
33	EY3502L1008	MOTOR	1	
34	EY3500Y6067	SCREW	6	*C K4-12
35	EY3502S6048	SCREW	1	
36	EY3502Y2008	POWER SWITCH	1	
37	EY3500K0067	BATTERY CONTACTS	1	
38	EY3510L0207	DUST COVER	1	
39	EY3542B7867	HEX WRENCH	1	
40	EY9602	TOOL CASE	1	*A
41	EY9PM11C	BLADE	1	*A
42	EY9101	BATTERY PACK	1	*A
43	EY0202	BATTERY CHARGER	1	*A
-	EY3501K8238	SAFETY INSTRUCTIONS	1	
-	EY3502K8108	OPERATING INSTRUCTIONS	1	